

CHARGING

Mains powered 12V DC 3.5A charger/power lead included, with plug adaptor. Only use the charger provided otherwise damage may occur.

- Unscrew the charging port cover on the back of the speaker/LED floodlight.
- Plug the DC end of the cable into the circular charge port.
- Plug the AC/DC adapter plug into a mains AC plug socket.
- The 4 x battery indicator LEDs will illuminate to show charging status. Once fully charged, all the indicator LEDs will illuminate continually.
- If the battery indicators do not illuminate, remove unplug the charger and try again.
- The charge time is 5 hours.
- Fully charge the speaker/LED floodlight with using for the first time.

The intelligent battery and charging lead mean that the speaker/LED floodlight can still be used during charging. Even with a fully charged battery, the lead can be used as a constant power supply.

MAINTENANCE AND CLEANING

WARNING: Ensure the unit is unplugged, switched Off and cool down before cleaning.

- To clean the unit, wipe the case with a slightly moist, lint-free cloth.
- Do not use any cleaning fluids containing alcohol, ammonia, or abrasives.
- Do not spray aerosol at or near the unit.
- Check the plug, power cable, and housing of the LED floodlight for damage before each use. If the lens is damaged it must be replaced immediately.
- Charge the speaker/LED floodlight every 3 months to maintain the life span of the battery.

DISPOSAL OF BATTERY



To preserve natural resources, please recycle or dispose of the battery pack properly. This battery pack contains rechargeable batteries. Consult your local waste authority for information regarding available recycling and/or disposal options. Do not attempt to open or remove any of the components.

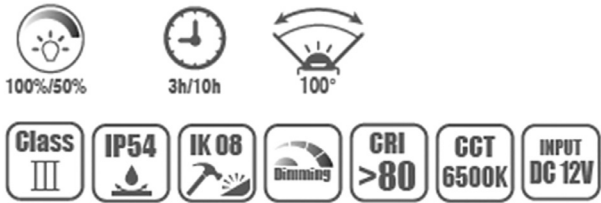
According to Waste Electrical and Electronic Equipment Regulations



The symbol on the product or its packaging indicates that this product must not be disposed of with your other household waste. Instead, it is your responsibility to dispose of your waste equipment by handing it over to a designated collection point for the recycling of waste electrical and electronic equipment. The separate collection and recycling of your waste equipment at the time of disposal will help conserve natural resources and ensure that it is recycled in a manner that protects human health and the environment. Please recycle where facilities exist. Check with your Local Authority or retailer for recycling advice. For further information visit www.recycle-more.co.uk

CMT Equipment Ltd T/A CMT Group CMT
Riverbridge House Anchor Boulevard
Crossways Business Park
Dartford DA2 6SL
United Kingdom

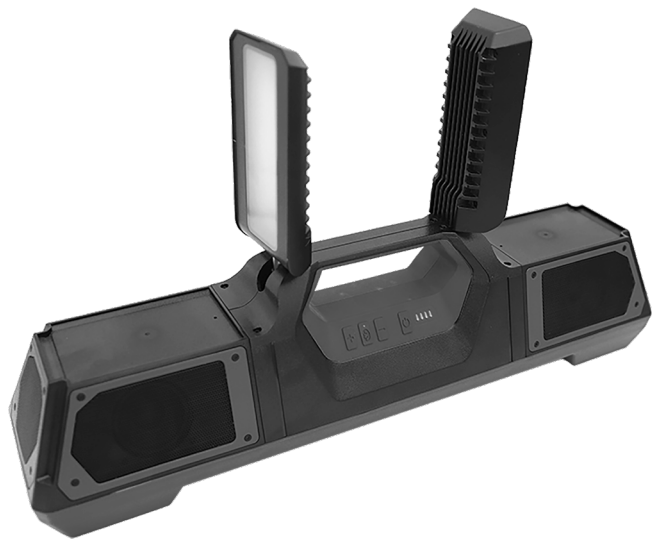
sales@cmt.co.uk
www.cmt.co.uk
Tele: 020 8311 1144



MAX WORKLIGHT BLUETOOTH SPEAKER 4000 LUMENS (40W), 40 WATT SPEAKER



LEDPLSSPK



Thank you for purchasing your new product. We recommend that you spend some time reading this instruction manual in order that you fully understand all the operational features it offers. Read all the safety instructions carefully before using and keep this instruction manual for future reference.

If you pass the unit onto a third party, make sure to include this instruction manual.

The following items included:

- speaker/LED floodlight.
- Mains lead with adapter.
- Instruction Manual.

SAFETY WARNINGS

Please inspect the speaker/LED floodlight for damage after unpacking. Do not continue to operate the speaker/LED floodlight if you are in any doubt about it working normally.

SAFETY INSTRUCTIONS

Read all the safety and general instructions. Failure to observe the safety and general instructions may result in electric shock, fire and/or serious injury.

ADVICE & IMPORTANT INFORMATION!

- Always check the speaker/LED floodlight, cable, and plug before use.
- Keep the product and all its parts out of the reach of small children.
- This product is not intended for use by persons (including children) with reduced physical, sensory, or mental capabilities, or lack of experience and knowledge, unless they have been given supervision or instruction concerning the use of the appliance by a person responsible for their safety.
- Do not use your speaker/LED floodlight unit near emergency/intensive care medical equipment, or during an electrical storm.
- To avoid hearing damage, do not listen to this speaker/LED floodlight unit at high volume levels for extended periods of time. Always keep the volume within reasonable limits.
- Avoid extreme degrees of temperature, either hot or cold. Place the unit far away from heat sources such as radiators or gas/ electric fires.
- Stop using the speaker/LED floodlight unit if you discover any damage.
- Do not open the speaker/LED floodlight unit. To be repaired only by a qualified specialist. Damaged speaker/LED floodlight, cables and plugs increase the risk of electric shock.
- Only use the charger supplied with the speaker/LED floodlight. Never remove the charger from the mains power socket with wet hands, and do not attempt to remove it by pulling the cord, always grasp the plug unit.
- DO NOT exceed 12V DC 3.5A charger output or damage may occur to the battery.
- The mains adaptor must be plugged in to an easily accessible plug socket with a protective earth contact.

- The mains adaptor plug must match the plug socket. Never modify the plug in any way. Do not use any mains adapter plugs with the speaker/LED floodlight unit. Unmodified plugs and matching plug sockets will reduce the risk of electric shock.
- Completely unwind the mains cable when operating the speaker/LED floodlight via mains supply. Otherwise, the mains cable can heat up. Do not misuse the cable, for example by using it to carry, hang up or unplug the speaker/LED floodlight.
- LEDs will become hot when switched on; do not touch and never place face downward – risk of fire! Even once the lamp has been switched off, DO NOT place face down as the LEDs will stay hot/ warm for a while.
- Storage- Speaker/LED floodlight must cool before placing in closed position before storage.
- Keep the cable away from heat, oil, sharp edges and moving parts. Damaged or entangled cords increase the risk of electric shock.
- In case of damage and improper use of the speaker/LED floodlight, vapours may be emitted. The internal battery can set alight or explode. Ensure the area is well ventilated and seek medical attention should you experience any adverse effects. The vapours may irritate the respiratory system.
- Only charge the speaker/LED floodlight unit using mains adapter supplied by the manufacturer.
- If left unused, a fully charged battery will lose its charge over time.
- Leaving the product in hot or cold places, such as in a closed car in the summer and winter conditions, will reduce the capacity and lifetime of the battery.
- Always try to keep your speaker/LED floodlight in a cool, moisture-free environment that's less than 32°C. A product with a hot or cold battery may not work temporarily, even when the battery is fully charged. Battery performance is particularly limited in temperatures well below freezing.
- The speaker/LED floodlight should be fully recharged after using the device each time. This will keep the health of the battery. If you plan to store your speaker/LED floodlight for longer than six months, charge the battery for an hour every six months to keep it fresh.
- Do not attempt to open the speaker/LED floodlight or replace the battery. It is built-in and not changeable.

FEATURES

- Ultra bright 4000 lumen 40W white COB LED, 6500K
- High performance integrated 40W Bluetooth speaker
- Dual Power- rechargeable and mains powered
- Super tough nylon-polymer construction and aluminum body
- 360° Vertical rotating floodlights, to angle the light beam
- Carry handle
- IP65 dust & water resistant
- IK08 impact proof- 3m drop (5 joules of impact)

- IP44 Charger- splashproof
- 7.4v 5200mAh integrated lithium-ion battery
- Operation Time: Approx: 100% Brightness 5h only lighting: 3h lighting + Speaker 50% Brightness 10h only lighting: 4h lighting + Speaker
- 4 x Battery level and charging indicator LEDs
- 5 hours charge time
- Mains charger adaptor: 12.5 V DC 3.5A, 5 meters cable: H05RN-F 2X1.0mm²
- Lamp dimension: 61.5 x 14 x 16.5 cm
- Weight: 4.1 kg
- Tripods available (not included)



LIGHT OPERATION

Press the power circle button on the speaker/LED floodlight to activate. The battery icon will illuminate showing the battery capacity – 4 bars mean fully charged. Press to get the desired light output, 2 light modes to choose (100% /50%). Press 3 times to switch Off the floodlight.

BLUETOOTH SPEAKER

Press the Bluetooth icon button once and the button blue LED above it illuminates, and the speaker alerts you that Bluetooth is activated. Then pair it on your mobile device by selecting “LEDPLSSPK” and you can start playing your favourite music. Increase the volume by pressing the “+” or “-” buttons. Press the Bluetooth icon button again to switch to turn Off Bluetooth.